



# GMT MONTHLY MEMBERSHIP PROGRESS REPORT

Results as of: 4/30/2018

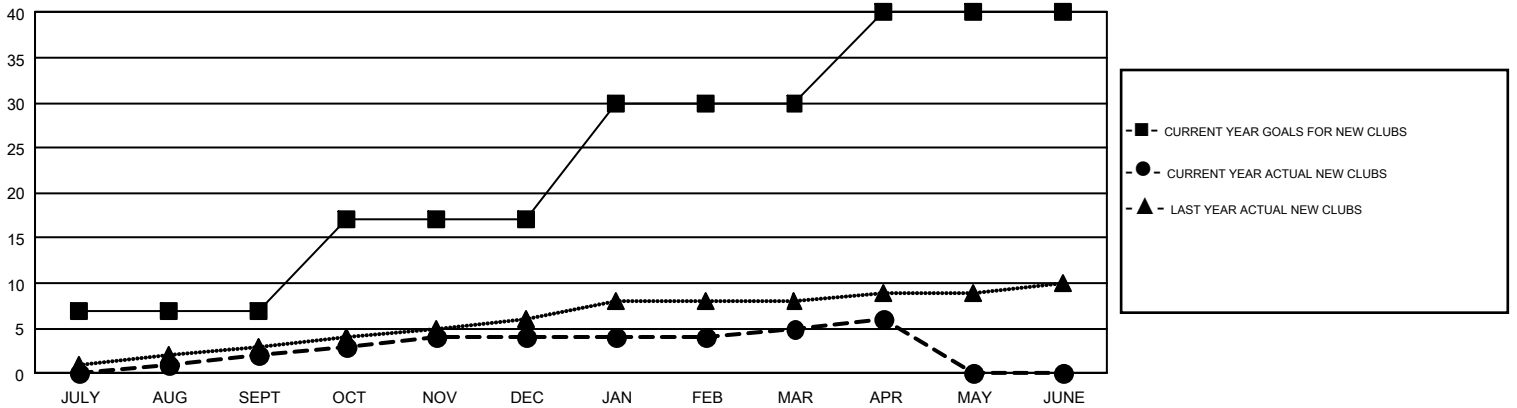
## GMT Constitutional Area 1, Group D

GMT: MICHAEL MOLEND A

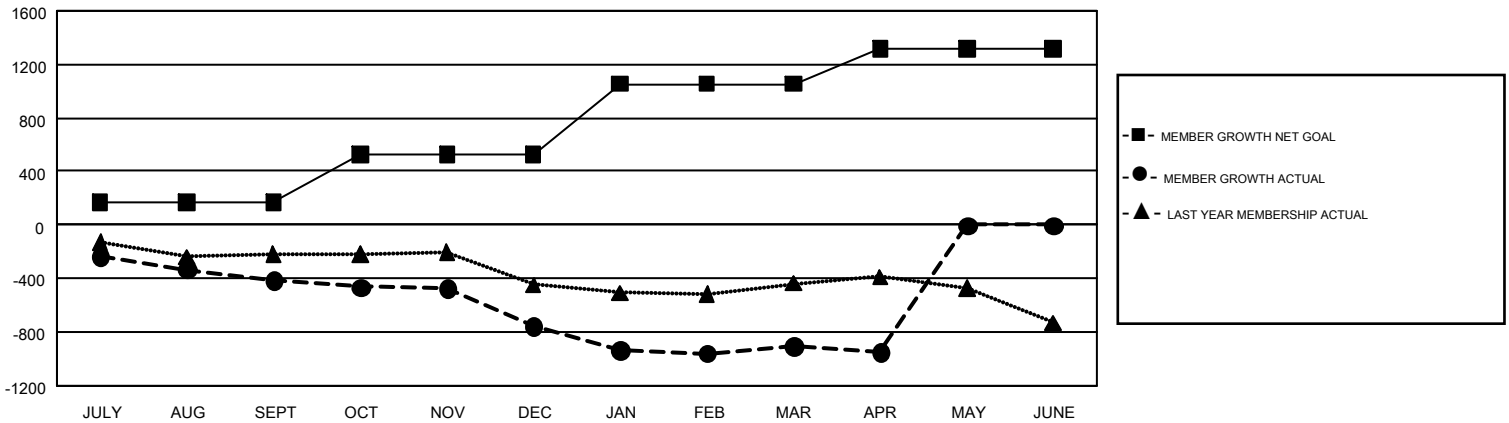
REPORT DOES NOT INCLUDE CLUBS IN UNDISTRICTED AREAS.

Clubs				Members			
RESULTS FOR 2017-2018				RESULTS FOR 2017-2018			
QUARTER	NEW CLUB GOAL	NEW CLUBS	DROPPED CLUBS	QUARTER	MEMBER GROWTH NET GOAL	MEMBER GROWTH ACTUAL	DROPPED MEMBERS ACTUAL (including transfers)
JULY/AUG/SEPT	7	2	5	JULY/AUG/SEPT	169	954	1,243
OCT/NOV/DEC	10	2	12	OCT/NOV/DEC	355	1,040	1,286
JAN/FEB/MAR	13	1	5	JAN/FEB/MAR	528	1,027	1,049
APR/MAY/JUNE	10	1	1	APR/MAY/JUNE	266	320	340

GOALS AND ACTUAL NEW CLUBS CUMULATIVE



GOALS AND ACTUAL MEMBERS CUMULATIVE



DROPPED CLUBS: 23	910 CLUBS OF 1,533 ADDED 1 OR MORE NEW MEMBERS	<b>GENDER DISTRIBUTION</b>
<b>DROPPED MEMBERS</b>	<a href="#">CLICK HERE FOR CUMULATIVE MEMBERSHIP DATA</a>	MALE            35,473 (74.13%)
DECEASED            549		FEMALE        12,377 (25.87%)
CLUB CANCELLED      145		TOTAL FAMILY UNIT MEMBERS            9,376
OTHER                    3,224		FAMILY MEMBERS PAYING HALF DUES            4,756
<b>TOTAL                    3,918</b>		